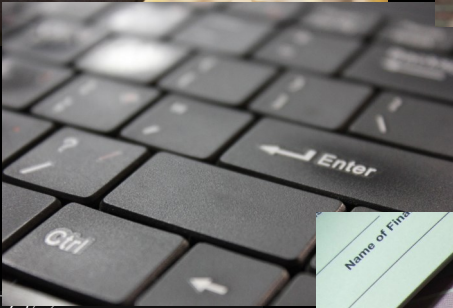
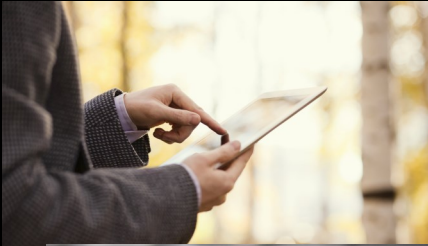


# Giving

Believers  
FELLOWSHIP



Believers  
FELLOWSHIP

Home Meet Us Ministries Sermons Contact News Give

**Give**

Home > Give

Believers Fellowship relies on the faithful generosity of its members to meet our financial obligations and fund our ministries. While we do not pass a collection plate on Sunday mornings there are several ways for you to give.

1. There are two collection boxes located in the back of the church. You may drop a check into either box on Sunday morning. You may also mail a check directly to the church at the address below.

2. You may use the bill pay section of your bank to send a check directly to the church. Meet her

Believers Fellowship relies on the faithful generosity of its members to meet our financial obligations and fund our ministries. While we do not pass a collection plate on Sunday mornings there are several ways for you to give.

## Check

There are two collection boxes located in the back of the church. You may drop a check or cash into either box on Sunday morning. You may also mail a check directly to the church.

## Your Bank

You may use the bill pay services of your bank to send a check directly to the church. Most banks allow you to set up a recurring or one-time payment. Contact your bank for details.

## Online

You may use the “Give” link on our website to use a credit or debit card to give. After clicking on the link, you will be directed to a secure website. Simply follow the directions to enter your credit, debit, or bank information and enter the amount you would like to give. It can be a one-time or recurring gift. You can also choose to pay any bank fees.

## Text

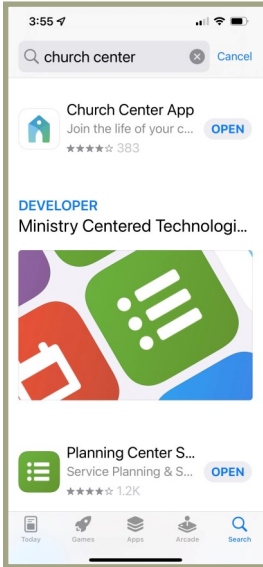
Text any dollar amount to 84321 to give.\*

## App

You can download the Church Center app for Apple or Android devices. Search for either app in Apple’s App Store or in Google Play. When you open the app, follow the directions to find the BF version of Church Center.

*\*Message & data rates may apply.*

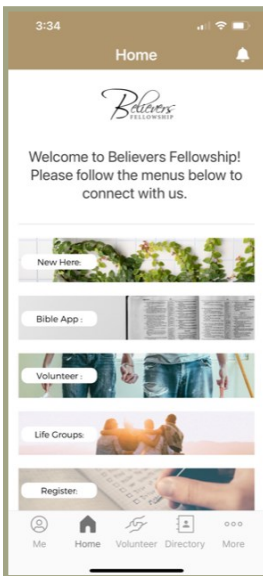
# How to Use Church Center to Give



1. If you don't already have the Church Center app, search for "Church Center" in the App Store or Google Play and download the iOS or Android app to your tablet or phone for free. You will be asked to find Believers Fellowship to get to our customized version.

If you would rather not use an app, you can use the web version of Church Center:

<https://ghbelievers.churchcenter.com>



2. Tap on "Give" at the bottom and you will be taken to a secure site to make your donation. Choose the amount. On the next screen, you can choose the fund, frequency of your gift and method of payment. You can even choose if you want to cover the processing fee.

You only need to enter your card or bank info the first time to set up an account. The last screen will ask you to confirm your gift. And that's it! Once your information is saved, you will be able to give in seconds the next time. Check out this page for more info:

<https://www.believersfellowship.net/church-center/>

The church is charged fees when you give online or when you use the Church Center app. There is a box you can check to pay for those fees if you like. There is no cost to the church if you write a check or if you use your bank's bill pay services.

We don't keep records for most giving at Believers Fellowship. However, we have started entering check information in PCO Giving. You can view a record of your online or check giving on the Church Center app. Simply tap on "View Profile" and then "My Giving."

If you provide an email address, a receipt will be sent to you each time you give. A statement will be emailed to you in January for the previous year's giving.

If you have any questions or if you need help, contact the church office at the number below during regular office hours.

Thank you for your generosity!



4112 Hunt ST NW

Gig Harbor, WA 98335

253-851-9286

[www.believersfellowship.net](http://www.believersfellowship.net)